

David Hoff

Marjon Ceramics October 30, 2022

Pumpkin Gnome and Strawberry Wall Clock

Supply List

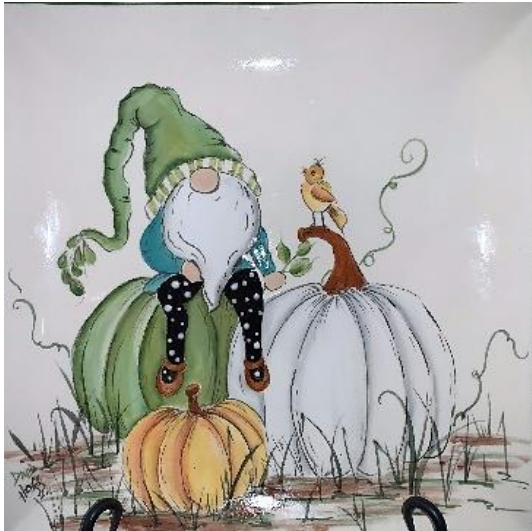
9:00 a.m. please arrive by 8:45 a.m.

For the Strawberry design we will be using Mayco Sculpting Medium to create raised Strawberries.

Ware

Gnome with Pumpkins

Picture shown is on Duncan's Bisque Coupe Square Charger. However, various sized patterns will be available. MB 1116 Casual Ware Dinner Plate will work well for the design. You need a 9" working surface of Bisque.



Strawberry Clock or Canvas Board

MB 1353 8" x 10" Canvas Board. If completing as a clock, in the center of the board drill a hole using a 1/4" carbide drill bit. **(I will have a bit with me for your use.)** Other choices of bisque are acceptable with a 9" working surface.



Brushes and Tools

Palette Knife
Sponge
#1 Liner
#2 Round
#4 Round
#6 Round
#8 Shader
#6 Shader
#2/0 Detail
Glaze Fan

Miscellaneous Materials

Water Bowl
Heavy Duty Plastic Page Protector
Red Pen
Standard Pencil
Paper Towels
Clay Carbon

Please Purchase supplies from Hosting Studio.