

Duncan® Envision® GLAZES Sprinkles™



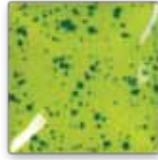
IN1207
Neon Red
Sprinkles



IN1208
Neon Orange
Sprinkles



IN1209
Neon Yellow
Sprinkles



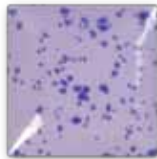
IN1210
Light Kiwi
Sprinkles



IN1211
Neon Blue
Sprinkles



IN1212
Cobalt Blue
Sprinkles



IN1213
Orchid
Sprinkles



IN1214
Honeysuckle
Sprinkles



IN1215
White
Sprinkles



IN1216
Very Black
Sprinkles



Available in 4-oz. and 16-oz. jars.



Kiln required



*Safe for use on
food containers*

Overglaze compatible.

Devilish Delight Deviled Egg Dish

Materials Needed:

Duncan® Oh Four® Bisque
29053 Deviled Egg Dish

Duncan® Envision® Glazes

IN 1053 Harvest
IN 1653 Downright White

Duncan® Envision® Glazes Sprinkles™

IN 1210 Light Kiwi Sprinkles

Signature Brushes

SB 806 No. 6 Round
SB 807 No. 6 Fan Glaze
SB 812 No. 10 Round

Miscellaneous Supplies

Sponge
Container for water
Pencil
Circle pattern
Foil or foam plate for palette



Instructions:

1. Wipe ware with damp sponge to remove bisque dust.
2. Using pencil and circle pattern, create a small circle in the very center of dish, then create a larger circle around small circle as shown.
3. Using the No. 6 Round, fill in small circle in center with three coats of **Light Kiwi Sprinkles**.
4. Use the No. 10 Round to brush three coats of **Light Kiwi Sprinkles** around egg indents as shown. Tip: If glaze is accidentally brushed into indents, use a damp sponge or wet brush to wipe away glaze for a clean surface.
5. Load the No. 6 Round with **Harvest** and brush three coats onto the circular area around the small circle in the center of dish and the egg indents.
6. Use the No. 10 and No. 6 Rounds as needed to fill in the remaining area on center of dish with **Downright White**. Let dry.
7. Use the Fan Glaze to brush three coats of **Light Kiwi Sprinkles** onto entire backside of dish. Let dry completely.
8. Stilt and fire to cone 06.

View the entire line of Duncan® Envision® Glazes at www.ilovetocreate.com

Learn more about Duncan® Envision®
Glazes Sprinkles™ from:

Duncan®

© 2011 iLoveToCreate®
5673 E. Shields Avenue
Fresno, CA 93727
www.ilovetocreate.com
PR 994 RM# 002649 8/11